

July 1, 2024

Band Families,

We are excited to return to our week of away band camp at Shepherd University in Shepherdstown, WV from Sunday, July 21 to Friday, July 26. This is a time of hard work, dedication, fellowship and music making!

PARENT MEETING:

Our mandatory parent/chaperone meeting is Tuesday, July 9 at 7pm in the WHS auditorium. Please enter through the alcove entrance where the band trailer is parked in the back of the school. We will discuss camp and rooms signups for Shepherd will be available at the meeting. Additionally, all of our band parents/caregivers will receive chaperone training at the meeting. There is a brief form to complete after the training and the forms are kept on file in the main office and BOE.

AWAY CAMP:

On Sunday, July 21, WHS doors will open at 4pm. Student leaders report time is 4:30. All other students will report to WHS on Sunday no later than 5pm. On time is ok, early is better. Please eat a meal prior to your arrival.

Luggage will be checked and loaded on the trailer along with instruments and other essential WHS camp equipment. Students are responsible for ensuring their own instrument/equipment is loaded on the trailer.

There's no substitute for a good attitude when beginning a time of intensive training like band camp. Come to camp well-rested and ready to work hard each day. Be focused, attentive and willing to listen to your directors, band camp staff, drum majors and other student-leadership. Everyone is working toward the success of all.

Have patience with your bandmates, because **everyone is learning**; from the new members – to which all of this is so new – to the upperclassmen who have been through this before and know the “tricks of the trade”.

Every marching band season brings with it its own lessons and challenges, so be ready to deal with them with a good attitude and a positive approach. Please remember that we are having camp to learn our show, we are not on vacation. The music, routine and marching should be the most important things on your mind during our time together. The goal is to have fun while putting a great show on the field. If everyone is focused on that, both the *fun* and the *product* will come.

Come to band camp prepared with the right equipment, your instrument in good condition, music memorized and the right attitude, and you'll be ready to make a positive contribution to your marching band.

Some folks have days when they don't feel like eating breakfast (or another meal). Band camp is not that time! Everyone is expected to be at every meal in the dining hall.

Your rooms will be inspected everyday by one of our camp commanders. It is your responsibility to keep your room neat and to respect the items in the room. Each side of the suite has two beds, a microwave, a small refrigerator, a desk and chair. ANY damage to the rooms or items in the room are the responsibility of the student and the student's caregivers.

Our away camp schedule is coordinated with many other events and groups on Shepherd University's campus that week. You are expected to follow the schedule and be on time (early) for all scheduled band functions. **IF YOU HAVE QUESTIONS, YOU NEED TO ASK!** If something is unclear, you need to get clarification.

On Friday, July 26, students will have breakfast at 7:00am. Rehearsal will run 8:00am-10:30am approximately. Students will pack belongings 10:45am-11:30am. No one will be “checked out” of the dorm room until it is clean, swept, inspected and all of the suitemates are dismissed by a chaperone or band director. WHS Band has a wonderful reputation at Shepherd University for being good stewards of the things offered to us and leaving things better/neater/cleaner than we found them. Caregivers will sign out students in the lobby. Safe travels and get some sleep!

At away camp, we have theme days! Dressing up is encouraged, but optional.

- Marvel Monday – wear your super hero t-shirts...DC is welcome!
- Tie-dye Tuesday – the more, the better!
- Wacky Wednesday – crazy hair, mismatched clothes, silly socks, etc. Just be sure you can rehearse in your gear.
- Throwback Thursday – wear an old band shirt from HS or MS. You can wear clothes from another decade.
- Patriot Friday – Wear your best red, white and blue!

HOME CAMP

Home (day) camp will run from Monday, July 29 to August 2 at WHS. Monday through Thursday we will rehearse from 8am to noon.

On Friday, August 2, students will need to pack a lunch and wear red, white and blue! We will meet from 8am through our 5pm parent performance at our WHS Stadium after our home camp on August 2 at 5pm. Please know that the performance is not open to the public. It is a special parent/caregiver preview of the show. Parents and caregivers will pick up their students after this performance and all equipment is returned to the band room.

Students should expect to be outside during home camp rehearsals. All students are responsible for bringing their own water bottles, proper footwear, sunscreen and other necessary supplies for music and marching rehearsals.

Check out our chaperone/volunteer opportunities at www.patriotsbandboosters.org. We are the largest organization at Washington High School and it takes the efforts of all of our families to make it successful for our wonderful students! Some chaperone needs give families opportunities to earn money for your student's account! If you have any questions, please contact me at LHazlett@k12.wv.us.

Regards,

Ms. Hazlett
LHazlett@k12.wv.us

Band Camp Packing List

Pack your items in a sturdy duffle bag or suitcase that can handle being packed on the band trailer with other luggage around it and on top of it. While you are on the bus and at Shepherd University, all school and county policies apply. This includes the dress code and substance policies.

The school buses and the entire campus of Shepherd University is an extension of Jefferson County Schools and Washington High School. This is a board-approved trip.

ITEMS TO BRING:

- **WATER BOTTLE** – BRING ONE TO EVERY REHEARSAL FOR THE ENTIRE SEASON
 - students will bring their own water bottles to all camp rehearsals. Water breaks will be given regularly. Students' names should be on the bottle.
- Bedding and pillow – The dorm bed will only be outfitted with a mattress.
- Towels – Shower curtains are provided in the dorm bathrooms
- Toiletries – We are staying for five nights, please plan for six (toilet paper is provided.)
- Feminine supplies
- Medications – All medications must be brought in their original containers (OTC or prescription). Put these in a clear Ziploc bag with your student's name clearly written. All medications will be held by our Registered Nurse (Nurse Sam) we have on staff for the entire camp. She will distribute the medications according to the labels and WHS Band medical forms.
- Comfortable clothes for a variety of weather/temperatures/conditions – shorts, t-shirts, tank tops, hats, a sweatshirt, a light jacket.
- Sleepwear
- Two pairs of sneakers – Supportive, closed-toe shoes and socks for marching. Choose function and comfort over fashion. You will be on your feet a lot – be kind to them. An extra pair is helpful if one pair becomes wet.
- Slides/flip flops/Crocs/Sandals – it is good to give your feet a break from marching shoes during sections and meal times. Giving them air is a good thing!
- Socks, socks and extra socks
- Umbrella
- Sunscreen, insect repellent, sunglasses, chapstick, band-aids, any athletic braces you might require.
- Instrument/Flag/Equipment/PENCILS – bring all accessories such as reeds, valve oil, mouthpieces, neck straps, harnesses, drum keys, cleaning cloths, swabs. Please label your instrument with an instrument tag or luggage tag.
- TWO lanyards with secure clasps – We “wear” our coordinate sheets while on the field. Each sheet is unique and lists the locations on the field for each student for the entire show. You will need one for your meal card and room key.
- Music/Flip Folder/Lyre – we do not plan to bring music stands all over campus for all sections of the band during sections and full band rehearsals.
- Phones are ok, but they are not to be used during rehearsals. We are at camp to work. Students will stay off devices (earbuds included) during all rehearsals. JCS social media policies will be followed. Cell reception could be weak for some carriers.
- Students will not need money, some students like to go to the Starbucks that is open in the dining hall during lunch.

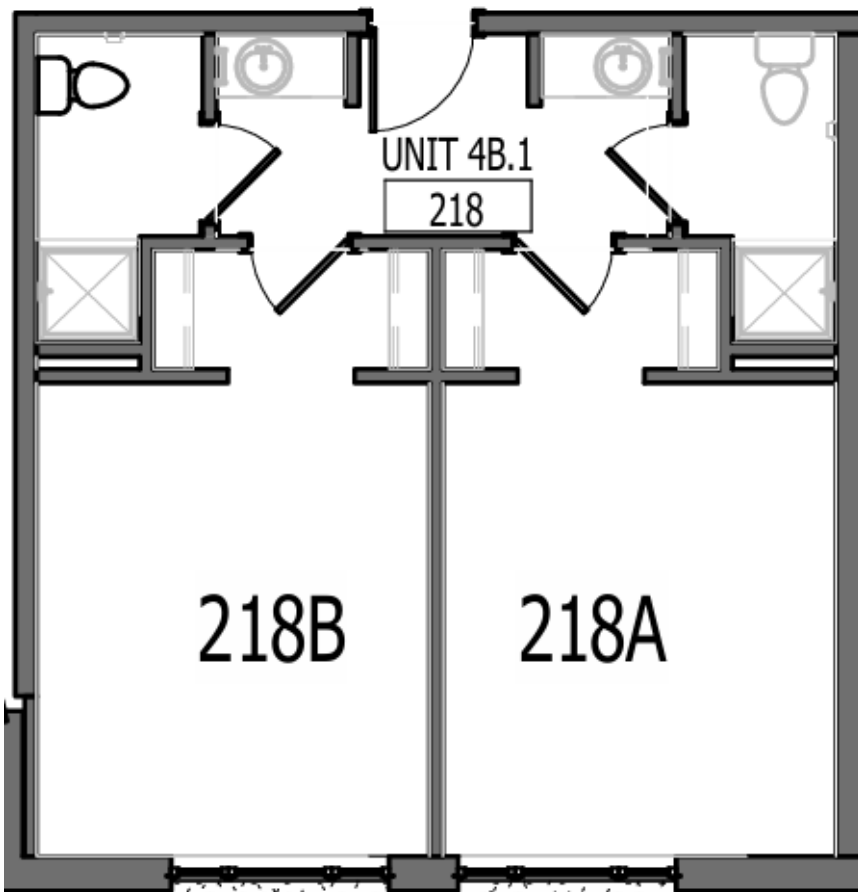
DO NOT BRING:

Illegal substances/paraphernalia, alcohol, weapons of any kind, and any other items not permitted on the property of Jefferson County Schools. The busses and the campus of Shepherd University are extensions on JCS while we are on this board-approved trip. **You know the rules and policies and are expected to follow them.**

NOT SUGGESTED, BUT PERMITTED:

Students may bring gaming devices and systems to use during afternoon free time, but they must be brought to Shepherd University by a parent. No TVs, monitors, gaming devices/systems will be loaded on the busses or the trailer. There is no room. There are common areas in the dorm for groups to gather. Bringing these devices is AT YOUR OWN RISK. We will not be responsible for damage, loss or theft.

DORM ROOM LAYOUT AT POTOMAC PLACE, SHEPHERD UNIVERSITY



In this sample room, four students max per suite. (In this example, 4 students are in 218.)

Two of them sleep in 218B and 2 of them sleep in 218A.

Sign ups for rooms happens during July sectionals.

Students who are not signed up will be assigned a room by one of the directors.

General Daily Schedule (weather permitting) and Daily Chaperone Needs:

- Wake Up Knock by overnight chaperones– 6:00am
- Breakfast – 7:00am – 7:40am
 - Dining Hall at 419 North King Street
- Morning Rehearsal – 8:00am – 11:00am
 - Field at H Lot
 - 5+ Chaperones (bring lawn chairs)
 - Secure large tents at practice field
 - Keep all water coolers full
 - Take pictures
 - Stay on hand for emergencies and communication with Nurse Sam
- Lunch – 11:00am – 11:40am
 - Dining Hall at 419 North King Street
- Sectionals – 12noon – 2:30pm
 - Various assigned locations on campus (outside in shade, inside music building)
- Afternoon Snack – 2:30pm
 - 3+ Chaperones to distribute snacks in dorm lobby
- Free Time – 2:30pm – 4:30pm
 - 10+ Chaperones
 - 2 male chaperones and 2 female chaperones on dorm floors
 - 2 chaperones in dorm lobby and stairwell
 - 4 chaperones to walk campus
- Dinner – 4:30pm – 5:15pm
- Evening Rehearsal – 5:30pm – 9:30pm
 - 5+ Chaperones (bring lawn chairs)
 - Setup and lower light towers
 - Secure large tents at practice field
 - Keep all water coolers full
 - Take pictures
 - Stay on hand for emergencies and communication with Nurse Sam
- Evening Snack – 9:30pm
 - 3+ Chaperones to distribute snacks in dorm lobby
- All students in assigned rooms – 10:30pm
- Lights Out – 11:00pm
 - 6+ chaperones
 - 2 male chaperones sleeping on second floor
 - 2 female chaperones sleeping on third floor
 - 1 male and 1 female chaperone for night guard duty and wake up knocks on doors at 6am the following morning.

Students may not leave campus and are expected to stay within the boundaries explained to them once we are on campus.

At no time will a student be in a room that is not assigned to that student. **THERE ARE NO EXCEPTIONS.**

The directors and the nurse will have master keys to access any rooms in case of an emergency.